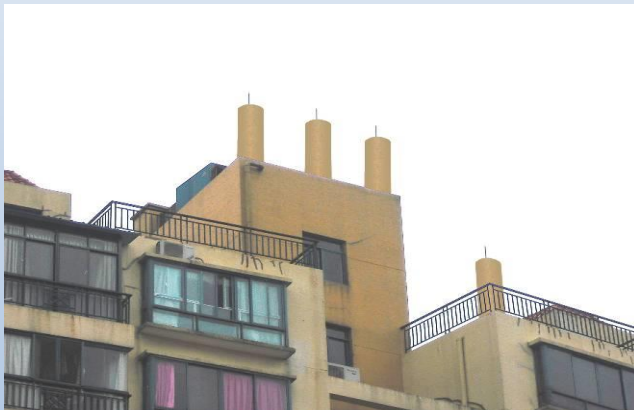


Introduction for Landscaping Antenna Concealment applications



Si-GOU Technologies Co., Ltd.
Shenzhen, China

Introduction

- A landscaping antenna normally are used to embellish the wireless antenna and its installation.
- The purpose is to make the antenna and its accessories just sited inside a regular housing, and the housing is consistent with existing environment, so basically this installation have no change to the existing environment.
- Compare to traditional antenna installation without outing housing, antenna with outer housing is much more neat and artistic, which is easy to be accepted by people.

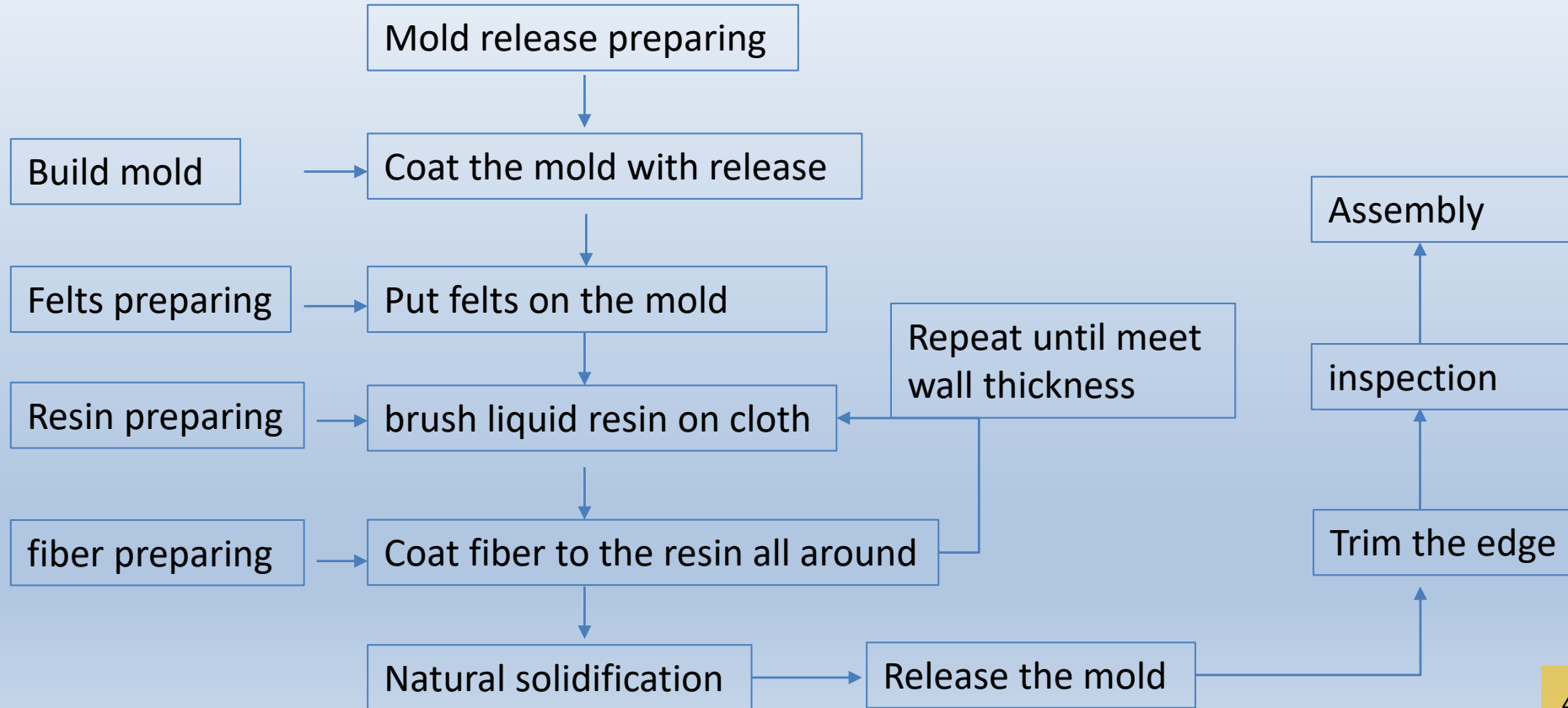
Material for Landscaping Antenna

- FRP, first priority.
- PVC, used only when light transmittance is required.



Material	Anti-aging	strength	Structural available	Mold price	Color available	Light transmittance
FRP	Good	Good	More	Low	Range of base color available	N/A
PVC	General	General	Few	High	Normally white only	Good

Process flow chart for FRP



Chameleon type

Technical Notes:

- Wall mount;
- Only one antenna can be fitted inside;
- Side access door;
- 600mmWx600mmDx900mmH and 600mmWx600mmDx1800mmH are available;
- Wind-resistance protection: Typhoon max grade 12.



Air-con type

Technical Notes:

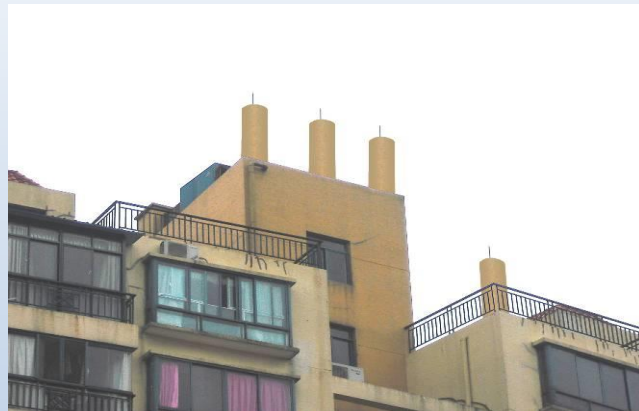
- Concrete base mount on roof;
- Up to 2 antenna can be fitted inside;
- Rear side access door;
- 950mmWx600mmDx1200mmH and 950mmWx600mmDx1800mmH are available;
- Normally use raising frame for installation;
- Wind-resistance protection: Typhoon max grade 12.



Cylinder type

Technical Notes:

- Roof concrete base mount;
- Only one antenna can be fitted inside;
- Side access door;
- $\phi 720\text{mm} \times H\text{mm}$ and $\phi 860\text{mm} \times H\text{mm}$ are available;
- Available H are 2000, 3000, 4000, 5000 and 6000;
- Raising frame is optional;
- Wind-resistance protection: Typhoon max grade 12.



Chimney type

Technical Notes:

- Roof concrete base mount;
- Only one antenna can be fitted inside;
- Side access door;
- 600mmx600mmxHmm,
- Available H are 2000mm, 3000 and 4000;
- Raising frame is optional;
- Wind-resistance protection: Typhoon max grade 12.



Water tank type

Technical Notes:

- Roof concrete base mount;
- Up to 3 antenna can be fitted inside;
- Bottom access door;
- 600mmx600mmxHmm,
- $\phi 1040\text{mm} \times \text{Hmm}$ and $\phi 1540\text{mm} \times \text{Hmm}$ are available;
- Available H are 3000, 4000, 5000 and 6000;
- 2000mm height of tank, raising frame is needed;
- Wind-resistance protection: Typhoon max grade 12.



Square column type

Technical Notes:

- Roof concrete base mount;
- Only one antenna can be fitted inside;
- Side access door;
- 600mmx600mmxHmm, 750mmx750mmxHmm and 900mmx900mmxHmm
- Available H are 2000mm, 3000, 4000, 5000 and 6000;
- Wind-resistance protection: Typhoon max grade 12.



Thank you very much